

Quick Installation Guide for Windows

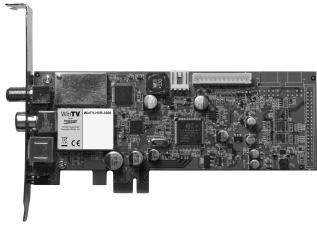
Hauppauge Computer Works, Ltd
Crown House, Home Gardens, Dartford,
Kent DA1 1DZ,
United Kingdom
tel: (+44) 203 405 1717
Support: www.hauppauge.co.uk/contact

www.hauppauge.co.uk

Hauppauge Digital Asia Pte Ltd
1093 Lower Delta Road #04-05
Tiong Bahru Industrial Estate
Singapore 169204
tel: +65 62769163
email: sales@hauppauge.com.sg
tech support: support@hauppauge.com.sg
www.hauppauge.com.sg

1. Package Contents

A PCI-Express TV Tuner



B Remote Control and two batteries (some models only)



C Infrared Sensor (some models only)



D A/V Cable (some models only)



E WinTV v8 Download Document with serial number*

- or -

Installation CD ROM with serial number* on the sleeve



For the exact contents please refer to the packaging description on the box.

* Please keep the serial number in a safe place. It is required for future installations.

1

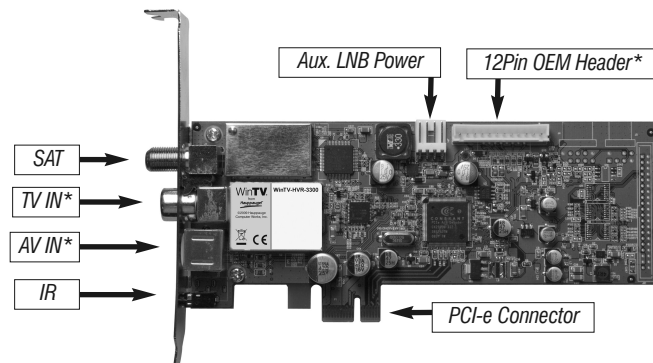
2. Installing the WinTV Card

- Turn off the computer and unplug the power cord.
- Remove the case lid (refer to your computer instructions for information on how to do this).
- Locate a free **PCI Express slot** and remove any metal backing plate which may be covering the slot at the back of the PC (PCI Express x1 cards can be used in any PCI Express slot e.g. a x8 or x16 slot).
- Plug the WinTV card in the PCI Express slot and fasten it with a screw.
- Replace the case lid and reconnect the power cable.

3. Connecting the Inputs

With **WinTV Starburst HD** you can receive digital satellite television (DVB-S / DVB-S2).

In addition to digital satellite TV, the **WinTV-HVR-4400 HD** supports digital terrestrial TV (DVB-T), analogue TV (PAL), and you can connect analogue video sources via the supplied A/V Cable. In addition to the above, the **WinTV-HVR-5525 HD** supports digital cable TV (DVB-C) and DVB-T2.



* Not present on the WinTV-Starburst HD

Input Connectors

SAT F-type connection for a direct feed from your satellite dish

TV IN RF connection for your rooftop TV aerial or cable TV

AV IN Connection to external sources (video cameras etc) via supplied A/V cable

IR Connection for the Infrared Sensor cable

On WinTV-HVR-4400/5525 HD, the TV input connector is also used as FM radio input. For **satellite reception** connect the cable from your SAT system or SAT antenna (dish) directly to the 'SAT' input. If the LNB on your satellite dish requires more than 350 mA current, the **Aux. LNB Power** connector on the TV tuner card should be connected to a power plug (used to power a floppy disc drive, FDD) of your PC system.

For **digital terrestrial reception** connect your DVB-T antenna to the 'TV IN' connector. For reception of **analog TV** or **DVB-C** from a cable TV feed, connect the 'TV' feed to the 'TV IN' connector on the TV Tuner Card.

Connect the Infrared Sensor cable to the 'IR' input on the TV Tuner Card, and place the eye on the other end so that the infrared light from the Remote Control can reach it.

An optional A/V bracket can be connected to the **12 pin OEM Header**, which provides additional audio / video inputs (not included).

2

4. Software Installation

Please note:

- **This step requires that the WinTV card is installed into the computer.**
- **It is recommended to disable your antivirus software during installation.**
- **An Internet connection is required for software activation.**

If a CD ROM is included, run Setup from the CD ROM.

If a CD ROM is not included, open your web browser and enter the download link from the **WinTV v8 Download Document** into the address bar. Or alternate, visit

www.hauppauge.co.uk ,

click on "SUPPORT", then "WinTV v8".

Download the WinTV8 Setup file to your computer.

Then run the downloaded file, for example **wintv8setup_34180.exe** (the version number may vary).

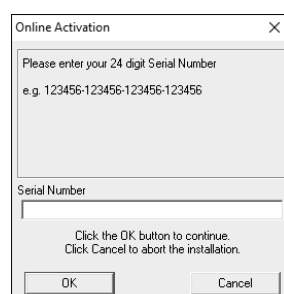
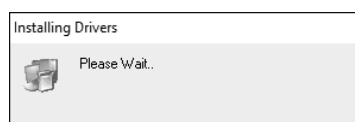
Select your language and click "Next". Follow the instructions on your screen.

First the device driver for the WinTV product will be installed.

In the "Activation Required" window, click on the button "Enter Serial Number" and enter the serial number from the WinTV v8 Download Document (or CD sleeve).

After successful activation, the WinTV application will be installed. It is recommended to use the default directories for the program and data files.

After the installation, you will find a 'WinTV 8' icon on your desktop and a "Hauppauge WinTV" folder in the Windows Start menu.



3

5. Run the WinTV Application and Scan for Channels



WinTV 8

To start the WinTV v8 application double-click on the WinTV 8 icon on your desktop. On the first start of the application, the Device Setup Wizard will appear.

Set the checkmark for the type of TV signal that is connected to the WinTV tuner card.

On digital terrestrial TV over antenna or digital cable TV select your **Country** and **Region**. If your region is not listed, choose the default selection of the region.

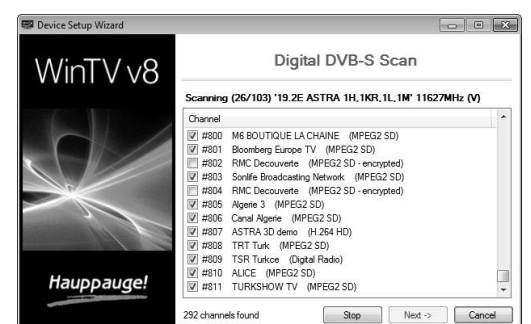
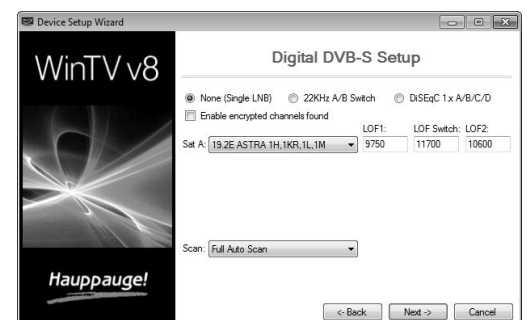
When receiving **Analog TV**, select your **Country** and **Cable or Antenna**. If you have connected an external video source using the supplied A/V cable, select "**External Inputs (Composite/S-Video)**".

When you select **Digital DVB-S/DVB-S2**, you will need to specify which satellite your dish is aligned with. In European, English speaking countries this is typically '28.2 Astra 2D'.

Click **Next** to start the scanning process.

Channels will be found and listed during the scan.

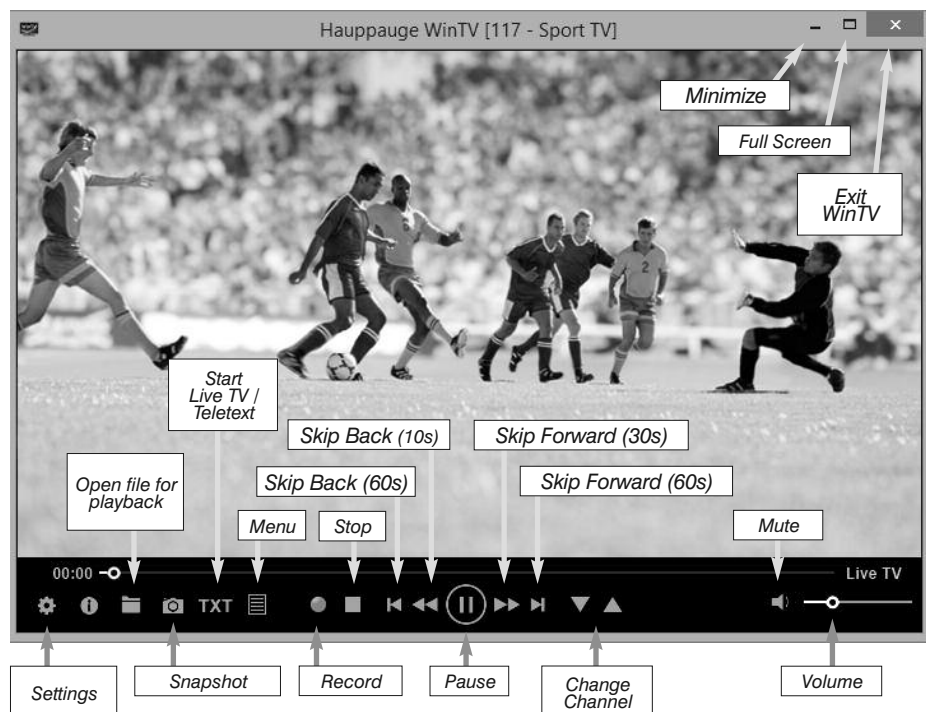
Once this is complete, click **Next** to finish.



4

6. Using WinTV v8

WinTV v8 has many features, including live TV, recording and pausing live TV, a TV scheduler and a video player to play back recordings in a window or full screen.

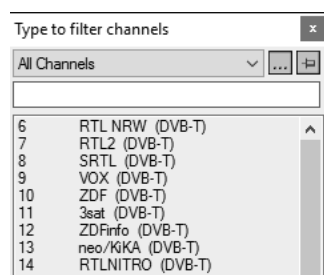


Start Live TV

To start Live TV, click on the TV icon:

Ways to Change Channels

- Click on the arrow buttons and .
- Enter a preset number using keyboard or remote control.
- Using the keyboard, enter the starting letter of a channel's name.
- Click on the Menu button and select "Find Channel" from the Context menu (pictured right).



Record TV Manually

- To start recording, click on the **Record** button.
- To finish the recording, click on the Record button again.

Recording Location

By default, recordings (and Snapshots) are placed into **C:\Users\Public\Videos**. You can change this in the WinTV settings on the 'Capture' tab.

5

WinTV Keyboard Commands

Next Channel	= Plus (+)	Live (now)	= Ctrl + C
Previous Channel	= Minus (-)	Full Screen	= Ctrl + W
Increase Volume	= Page up	Subtitles on / off	= Ctrl + S
Decrease Volume	= Page down	WinTV Settings	= Ctrl + I
Show Channel List	= Ctrl + L	Start TV	= Alt + T
Mute	= Ctrl + M	Last Channel	= Alt + P
Display Info	= Ctrl + O	Start Recording	= Alt + R
Stream Details	= Ctrl + D	Stop	= Alt + S
Teletext	= Ctrl + T	Open File	= Alt + F
Pause Video	= Ctrl + Q	Make Snapshot	= Space Bar
Play	= Ctrl + P	Change Aspect Ratio	= Ctrl + A
Skip Ahead	= Ctrl + F	Exit Full Screen	= Esc
Skip Back	= Ctrl + R		

7. Infrared Remote Control

The Remote Control is compatible to WinTV 8 and Windows Media Center.

Preparations

1. Insert batteries in the Remote control.
2. Connect the IR cable to the IR port of the WinTV card.

Using the Remote Control in WinTV

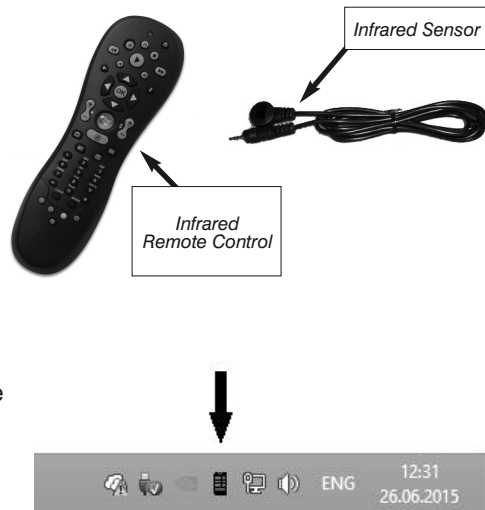
The IR software (ir.exe) should start automatically when Windows starts (you should see a small black remote control icon in the Windows taskbar).

Press the red color button on the remote control to start the WinTV application.

Note: The WinTV application will only respond to the remote control, if it is the currently active window.

Using the Remote Control in Windows Media Center

For Windows Media Center, the IR software (ir.exe) is not required, but you need to configure the remote control for Windows Media Center use. For this, click on **Hauppauge CIR Config Tool** in Windows Start menu in- 'All Programs' - 'Hauppauge WinTV'. Select your Media Center remote here. All the buttons will now function as any certified Media Center remote control.



7

Playing Back Recordings

To watch a recording, click on the **Open File for Playback** button and select the recording, or click the **Menu** button and select "Recordings" from the menu.

TV Guide

Many digital TV channels transmit Electronic Program Guide information (EPG). This information is collected and displayed in the TV Guide window. Click a program title with your mouse to see more details about the entry.

To record a program, click on **Record** in the details view. The scheduled recording is added to the Scheduler window. To rescan all frequencies for TV Guide information, click on **Update EPG**.

Manually Schedule a Recording

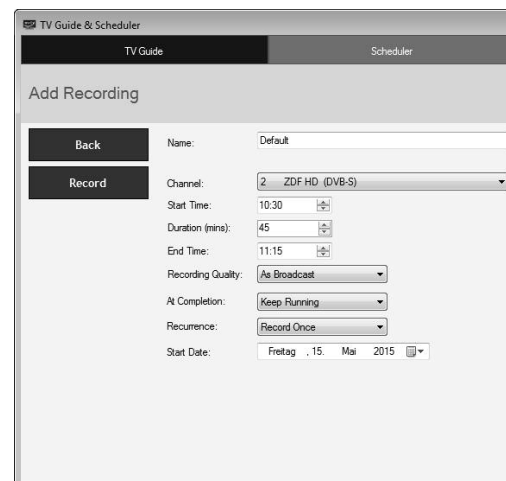
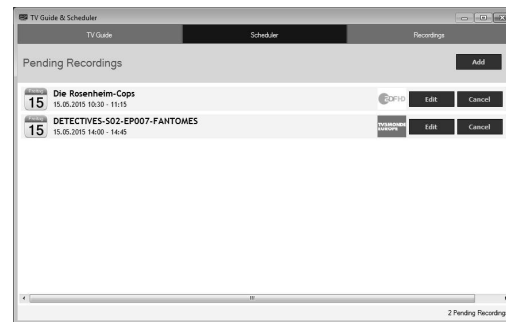
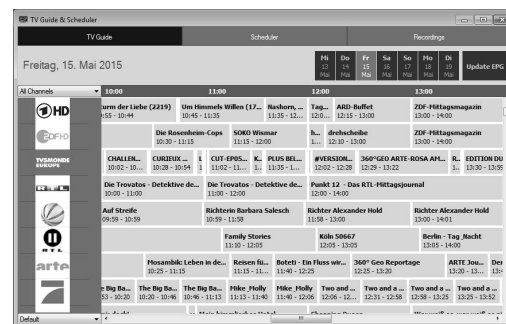
Click on the **Menu** button and select "Scheduler" from the menu.

The Scheduler allows you to record a TV program at a certain date and time on a specified channel. It lists all scheduled recordings added by the TV Guide as well as any manual recordings that have been set.

From here you can **Edit** or **Cancel** (delete) existing schedule entries.

To schedule a new recording, click on the **Add** button. You will need to select the channel, set the start time, duration etc. and confirm with a click on the **Record** button.

Note: The WinTV application does not have to be running for a scheduled recording to work, but your PC will need to be either turned on, in Standby or in Hibernate mode. All scheduled recordings are performed in the background by the task "WinTVRec.exe". If a recording is started while you are watching live TV, WinTV will display the TV program being recorded.



6

8. Further Information

Checking the Device Driver

In the **Control Panel** click **System** and select **Device Manager**. In the category "Sound, video and game controllers" you should see a "Hauppauge WinTV-..." entry and in "Human Interface Devices (HID)" you should see a "Hauppauge CIR Receiver" entry without any exclamation mark.

Digital Terrestrial TV Reception (DVB-T) in the UK

In the United Kingdom, you can find information about DVB-T reception in your area on this website: www.digitaluk.co.uk

For the best DVB-T reception, we recommend the use of a roof top antenna.

When using an indoor antenna with built in amplifier, the power for the amplifier needs to come from a separate power supply.

Software Updates and FAQ

In the **Support** section on the Hauppauge website you can find the latest software updates for your product, answers to frequently asked questions and other up to date information.

United Kingdom: www.hauppauge.co.uk

Singapore: www.hauppauge.com.sg

How Can I Rerun the Channel Scan?

To scan for channels again, in the main WinTV window click on the gear icon , then select the "Devices" tab, click on the WinTV tuner entry and click on "Tuner Setup".

Display Problems

If there are problems with the TV display, they can possibly be rectified by changing the video renderer options. Click on the Settings button in WinTV and select the "General" tab, then select a different video renderer (e.g. VMR9). Restart the WinTV application.

FCC Statement FCC ID: H90WINTV CE Statement: This equipment has been tested and complies with EN 55013, EN 55020 and IEC 801-3 part 3 standards.

CAUTION: Changes or modifications not expressly approved by the party responsible for compliance to the FCC Rules could void the user's authority to operate the equipment. Supplementary Television Broadcasting Receiving Apparatus - Appareils supplémentaires de réception de télévision, Canada. Nordic note: Ma kun tilkøples kabel-TV nett via galvanisk isolator.

Waste Electrical and Electronic Equipment (WEEE): The device may not be disposed of with household rubbish. This appliance is labeled in accordance with European Directive 2002/96/EG concerning used electrical and electronic appliances (Waste Electrical and Electronic Equipment - WEEE). The guideline determines the framework for the return and recycling of used appliances as applicable throughout the EU. To return your used device, please use the return and collection systems available to you.

8